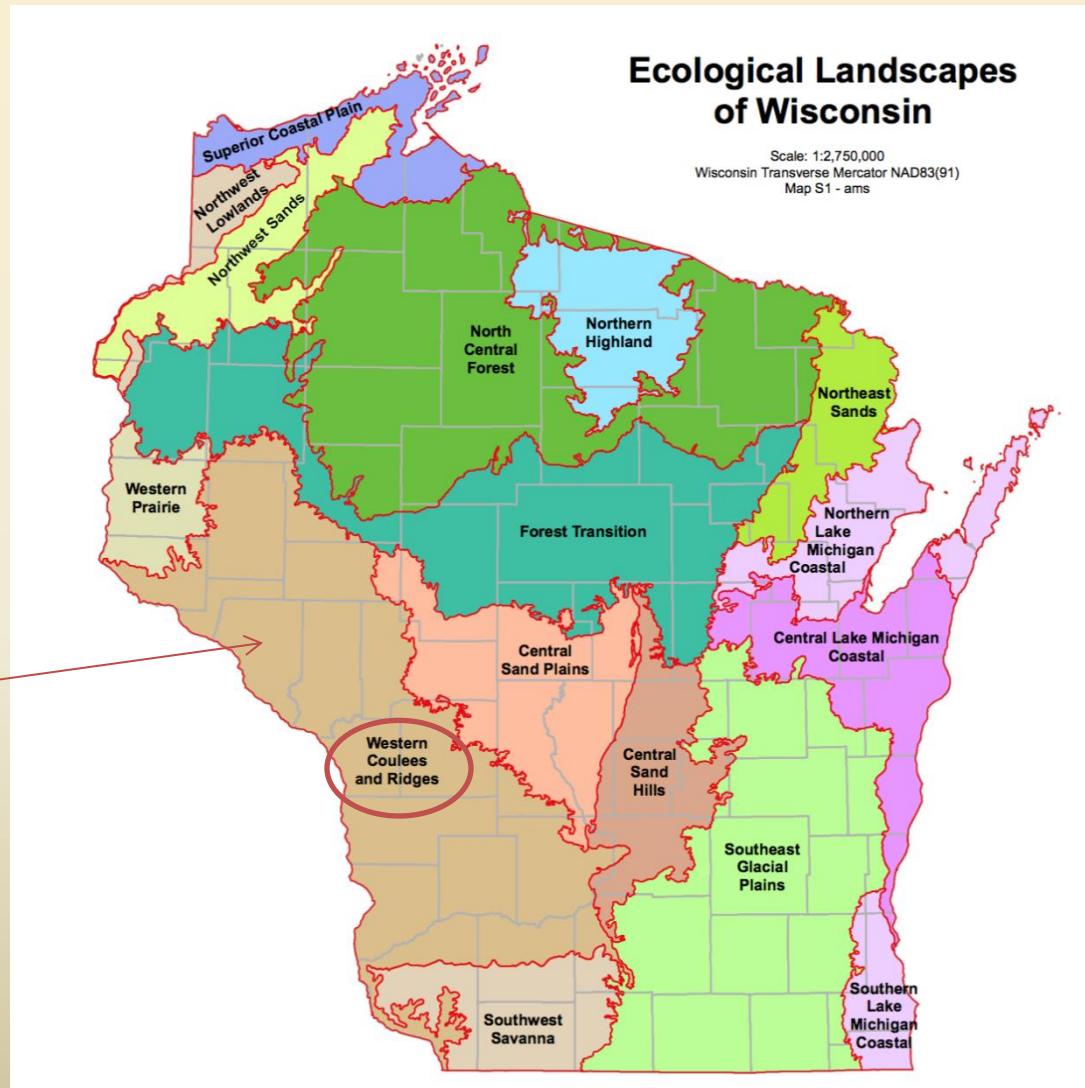


The Important Role of Landowners in Managing Unique Habitats

Darcy Kind
Private Lands Biologist
WDNR- Madison
Darcy.Kind@wisconsin.gov

WI Wildlife Action Plan

Western Coulees and Ridges



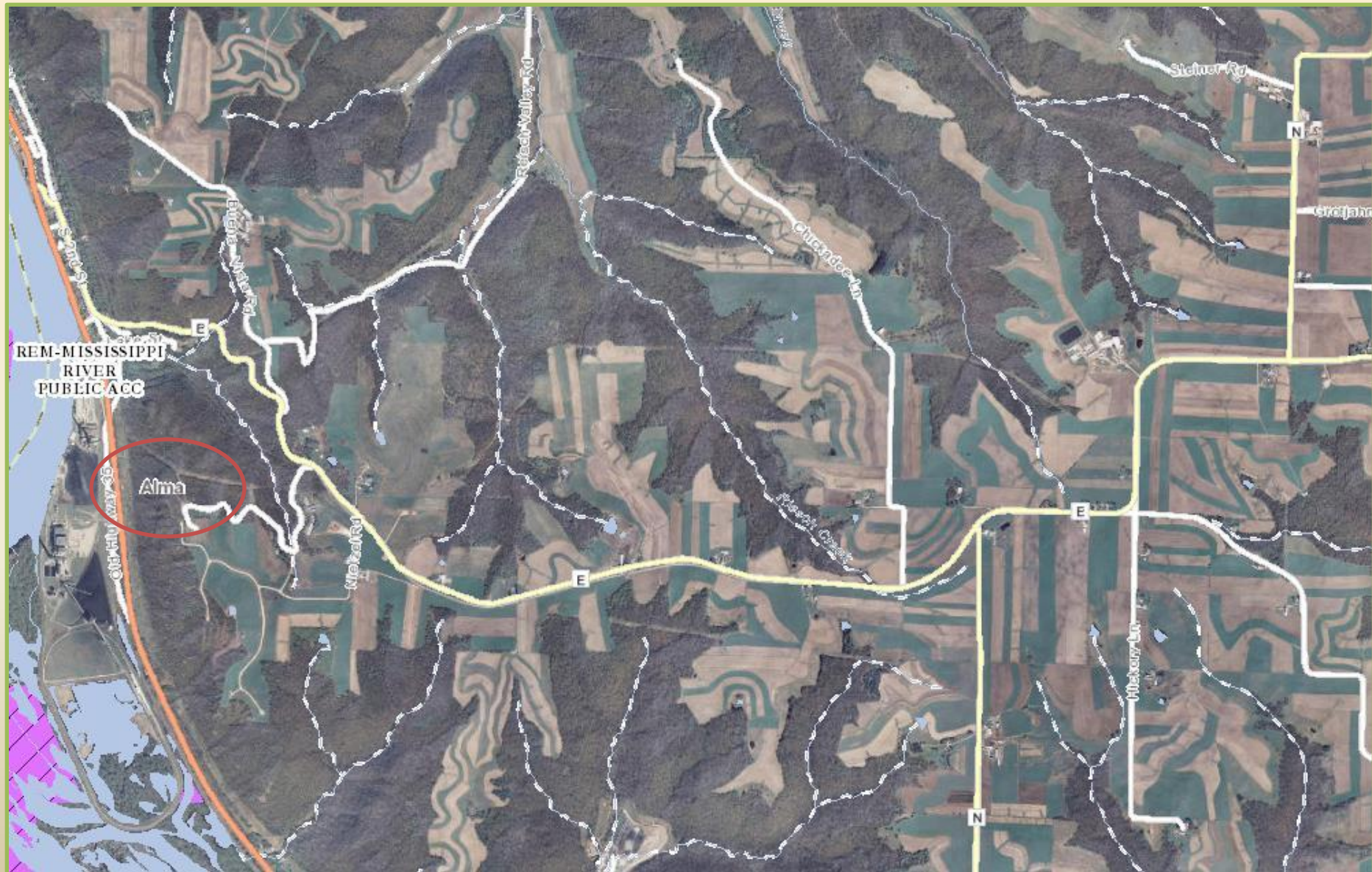
WI Wildlife Action Plan

Western Coulees and Ridges

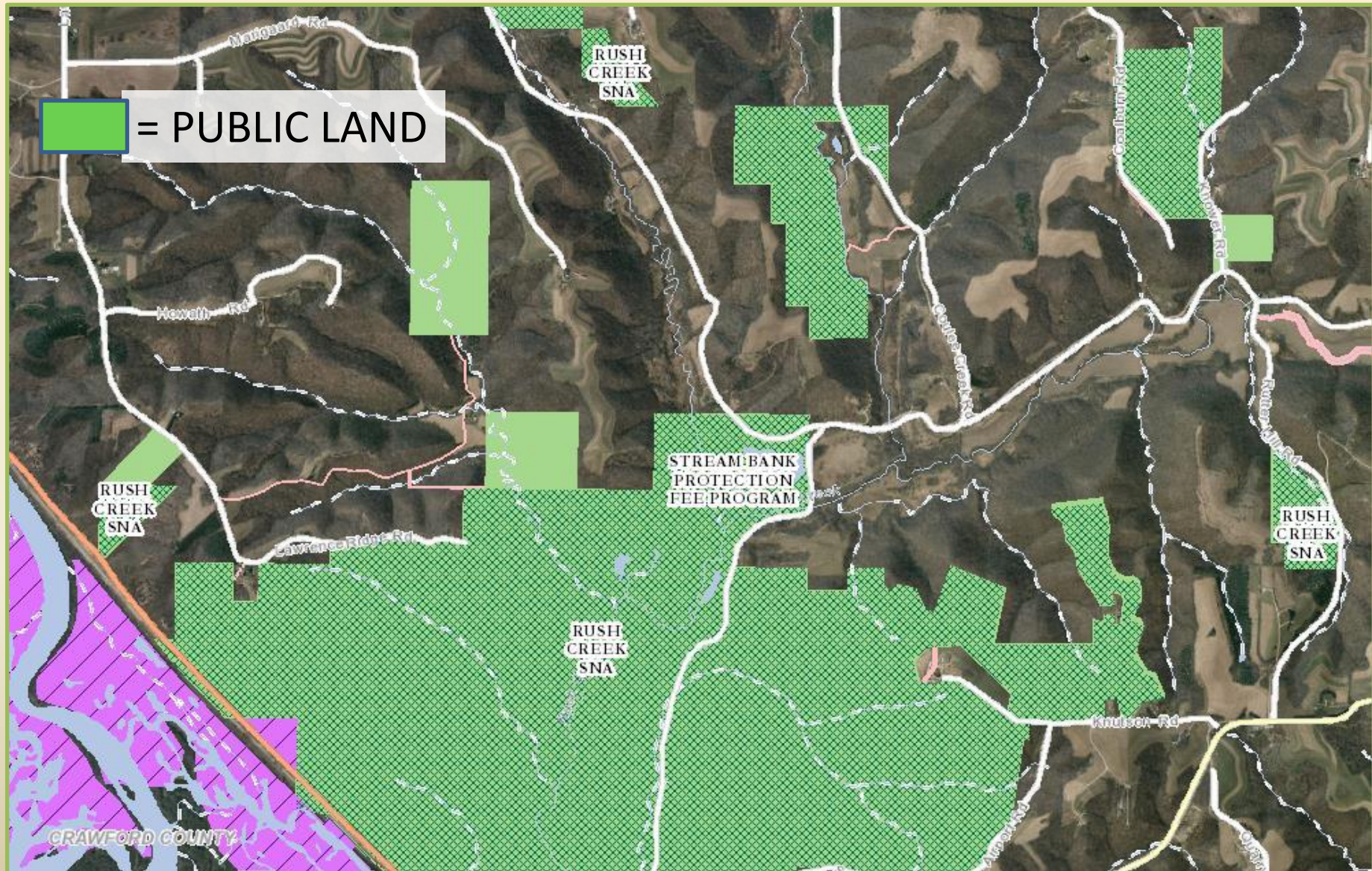
- Offers the best opportunities **in the state to maintain many of southern Wisconsin's natural communities.**
- Forests can be **managed and conserved here at virtually all scales**, including areas up to hundreds, or even thousands, of acres.
- **Oak forests are more abundant here than any other ecological landscape**, mesic maple-basswood forests are also widespread.
- All of these forest types can provide **CRITICAL breeding and/or migratory habitat for significant populations of native plants and animals.**
- Maintaining large blocks of these forest types, including with combinations of these types of forest is an important.
- **Much of the acreage is privately owned**

Who is charge of conservation?

PRIVATE LAND vs. PUBLIC LAND

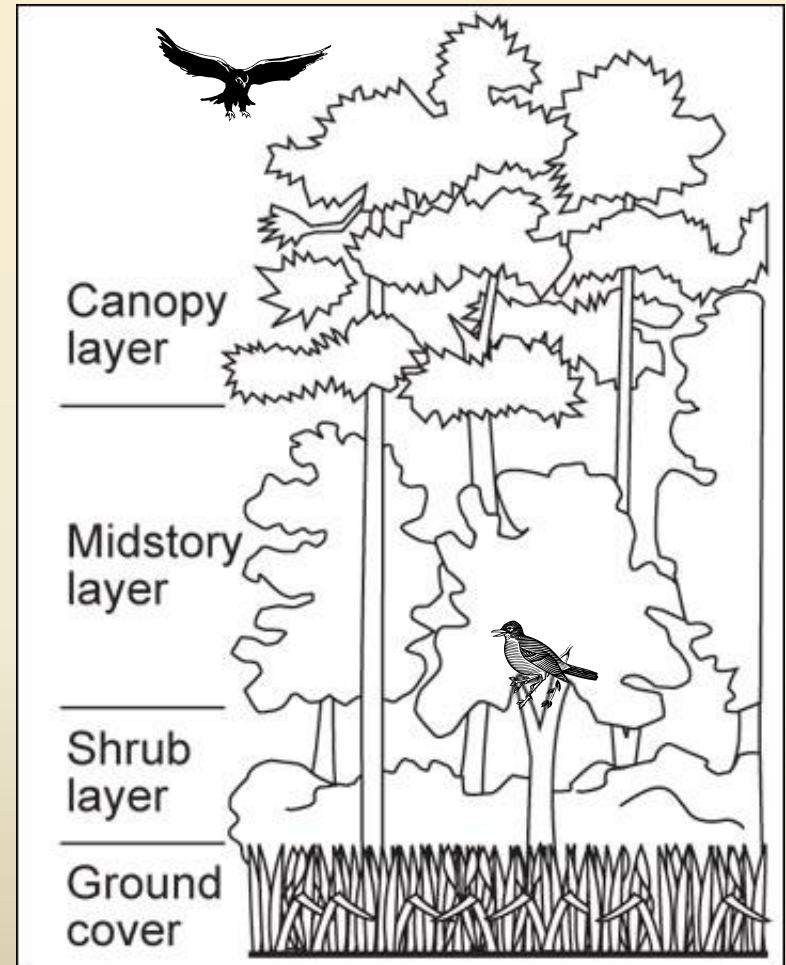


Meanwhile, downstream.....



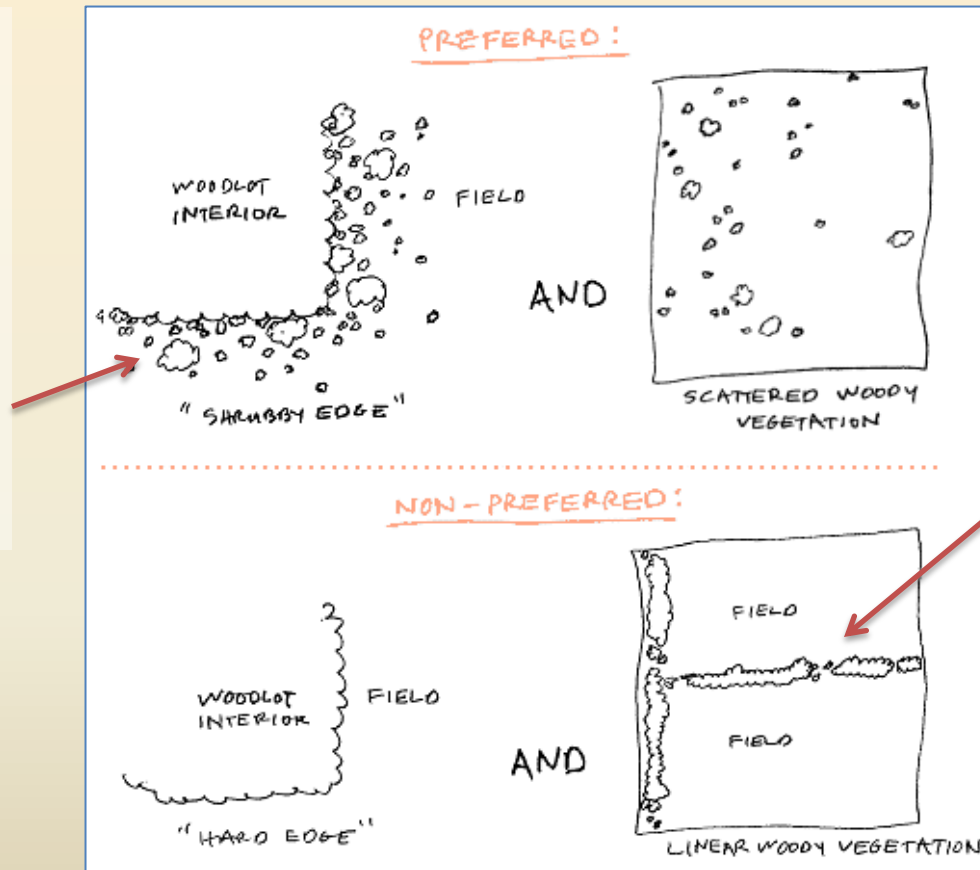
Forestry Enhancements That Can Benefit Wisconsin Wildlife

- **Species-** shrubs and trees provide different food at different times of the year
- **Layering-** shrubs and trees of different size classes and species



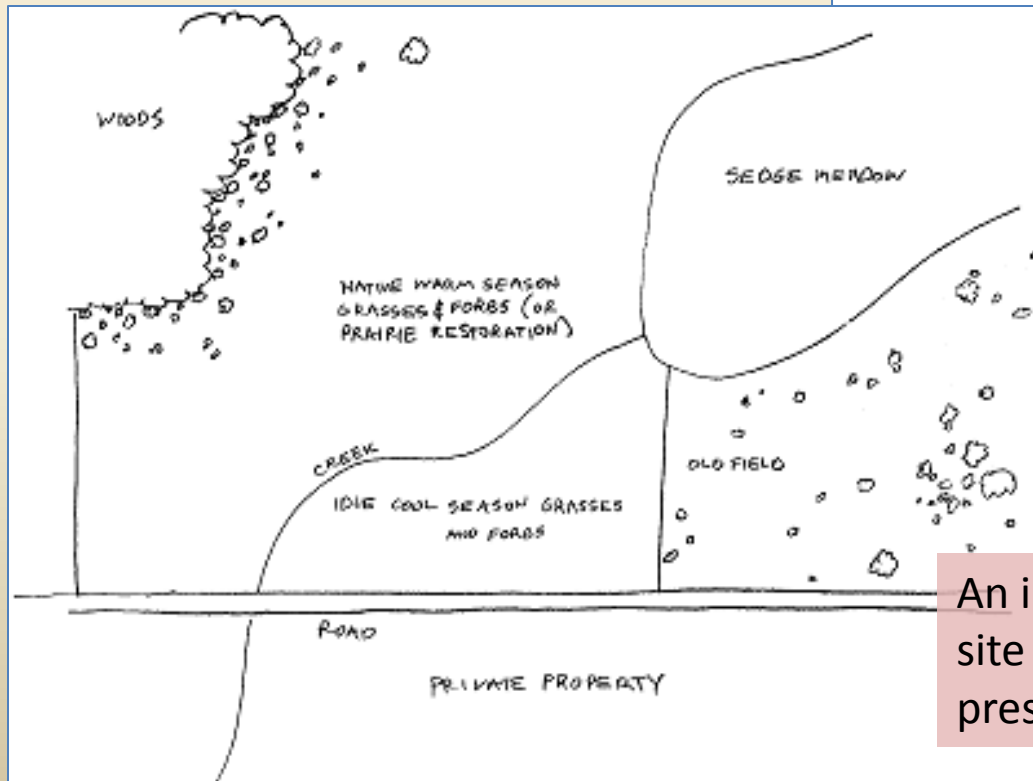
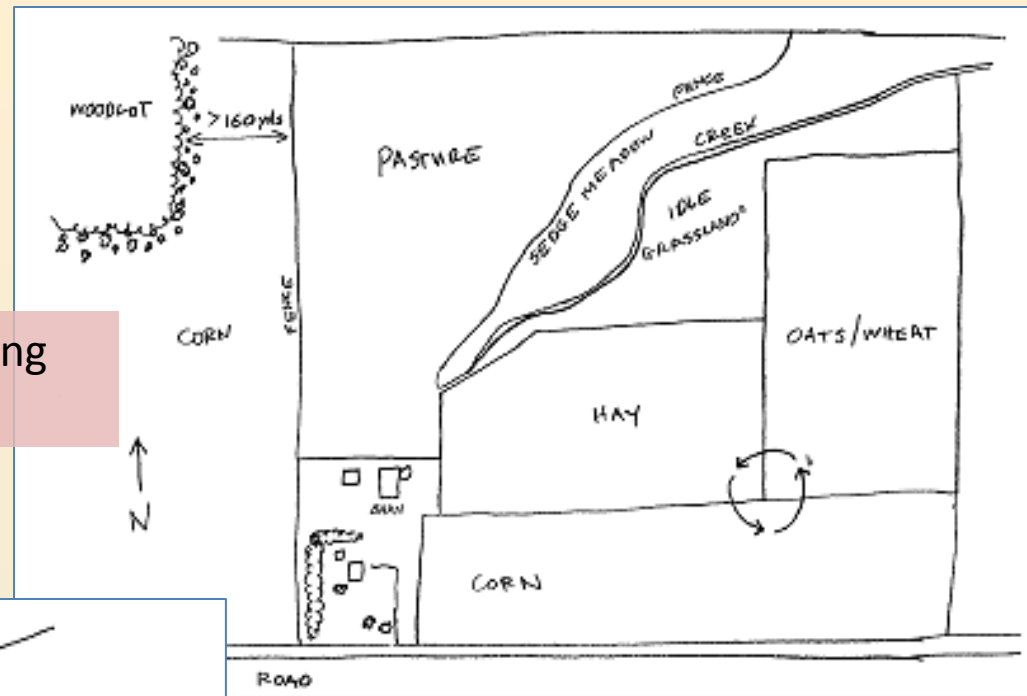
Forestry and Field Enhancements

Gradual or feathered edges are more desirable than abrupt edges occurring between very different habitat types



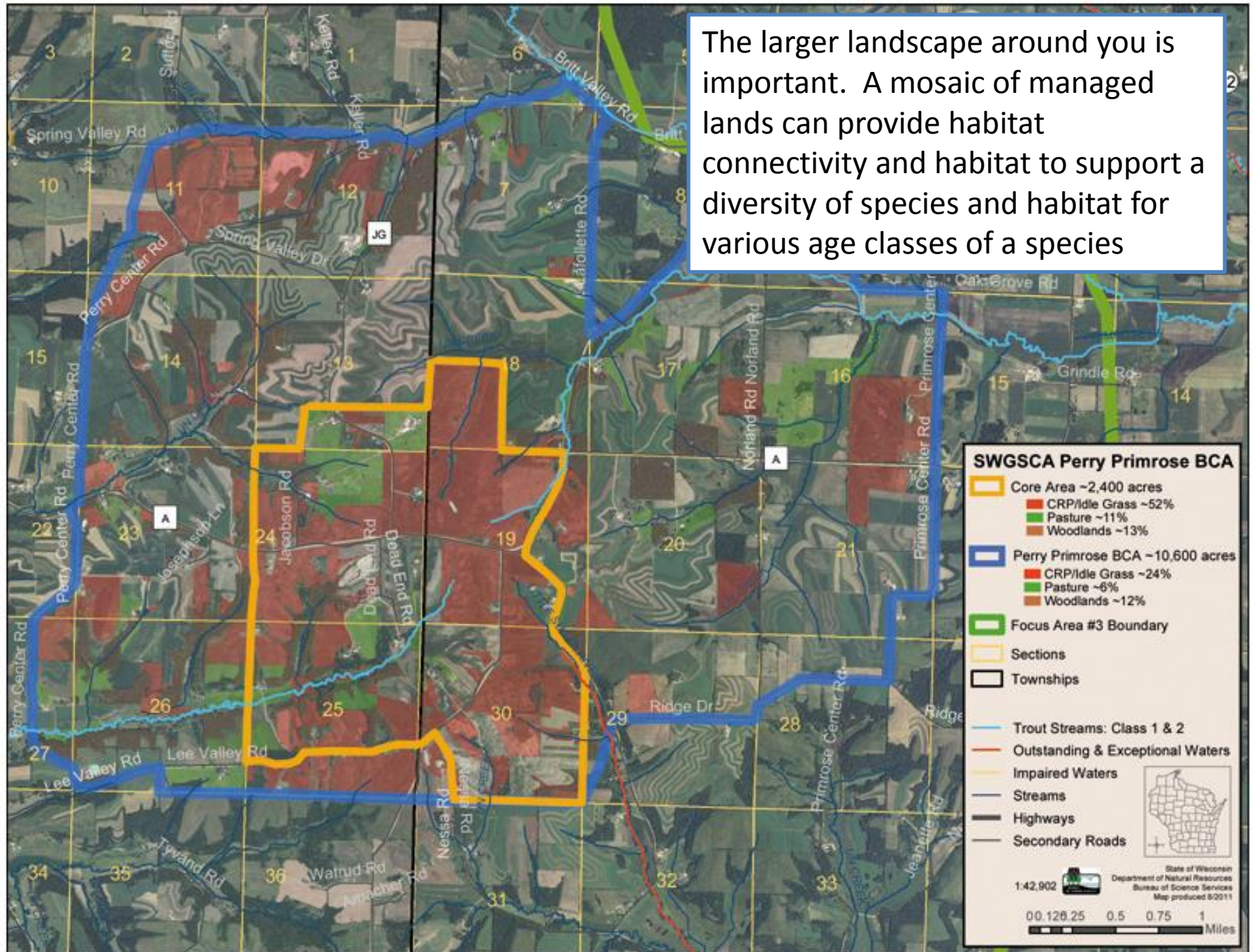
Dense fence lines are less desirable—fields like these are avoided by grassland birds because they harbor predators and create smaller, less open areas for habitat

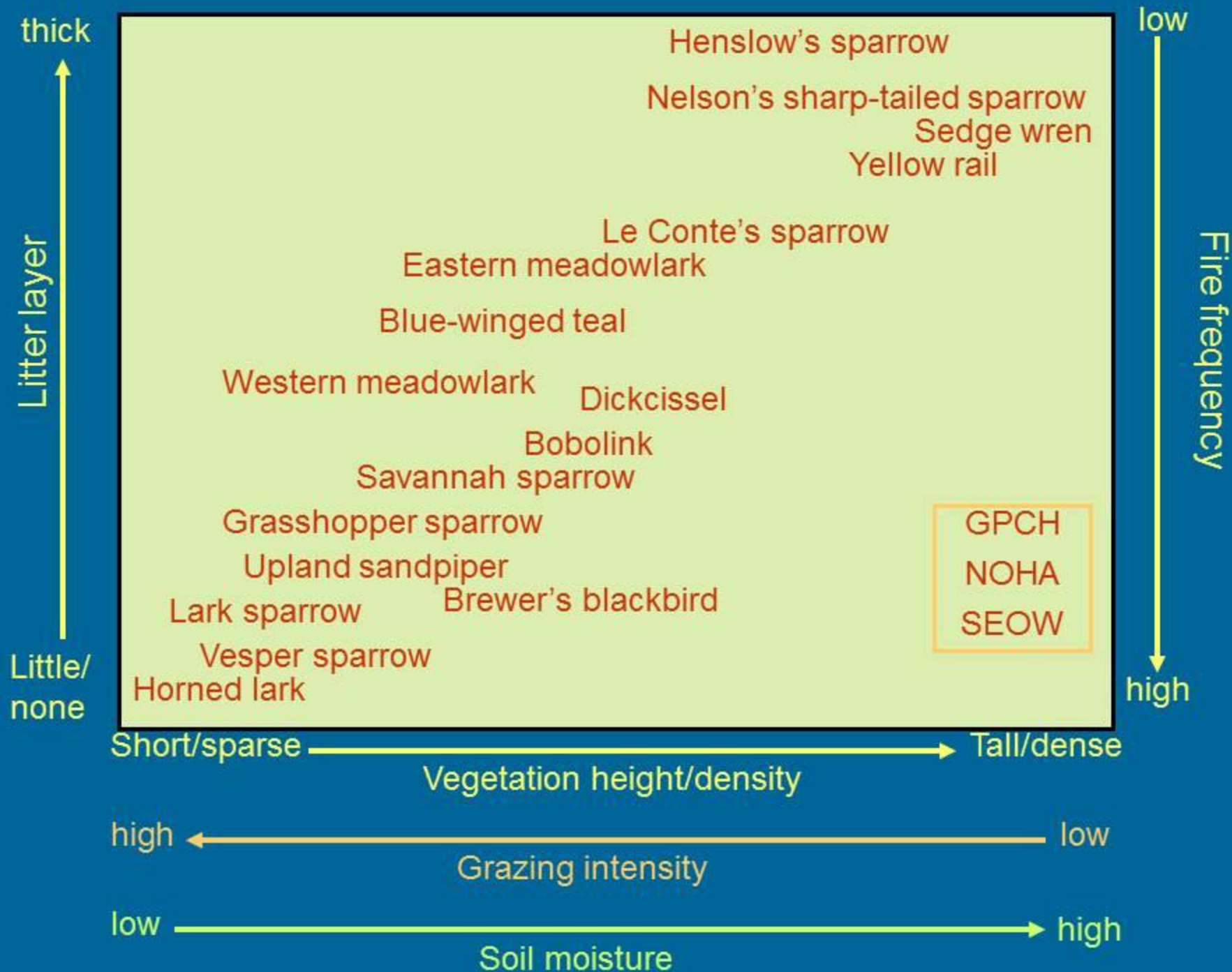
An example of an arrangement of working lands on a Wisconsin farm.



An idealized example of the same site if were managed as a wildlife preserve

The larger landscape around you is important. A mosaic of managed lands can provide habitat connectivity and habitat to support a diversity of species and habitat for various age classes of a species





Meet some private landowners....

Managing for Bobolinks





Town of Highland, Iowa Co.

Late mown alfalfa
provides annual nesting
habitat for bobolinks



Tillable land

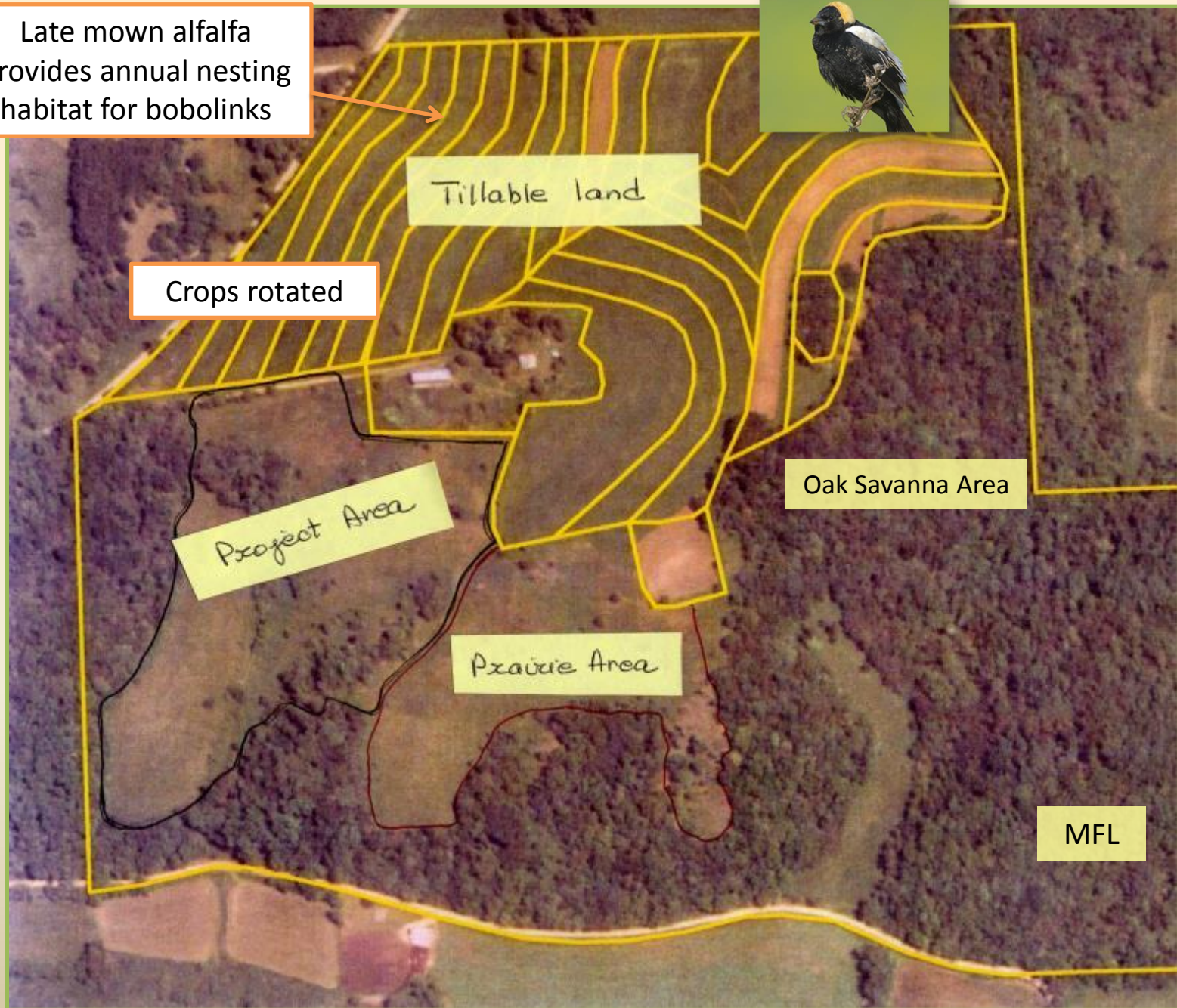
Crops rotated

Project Area

Oak Savanna Area

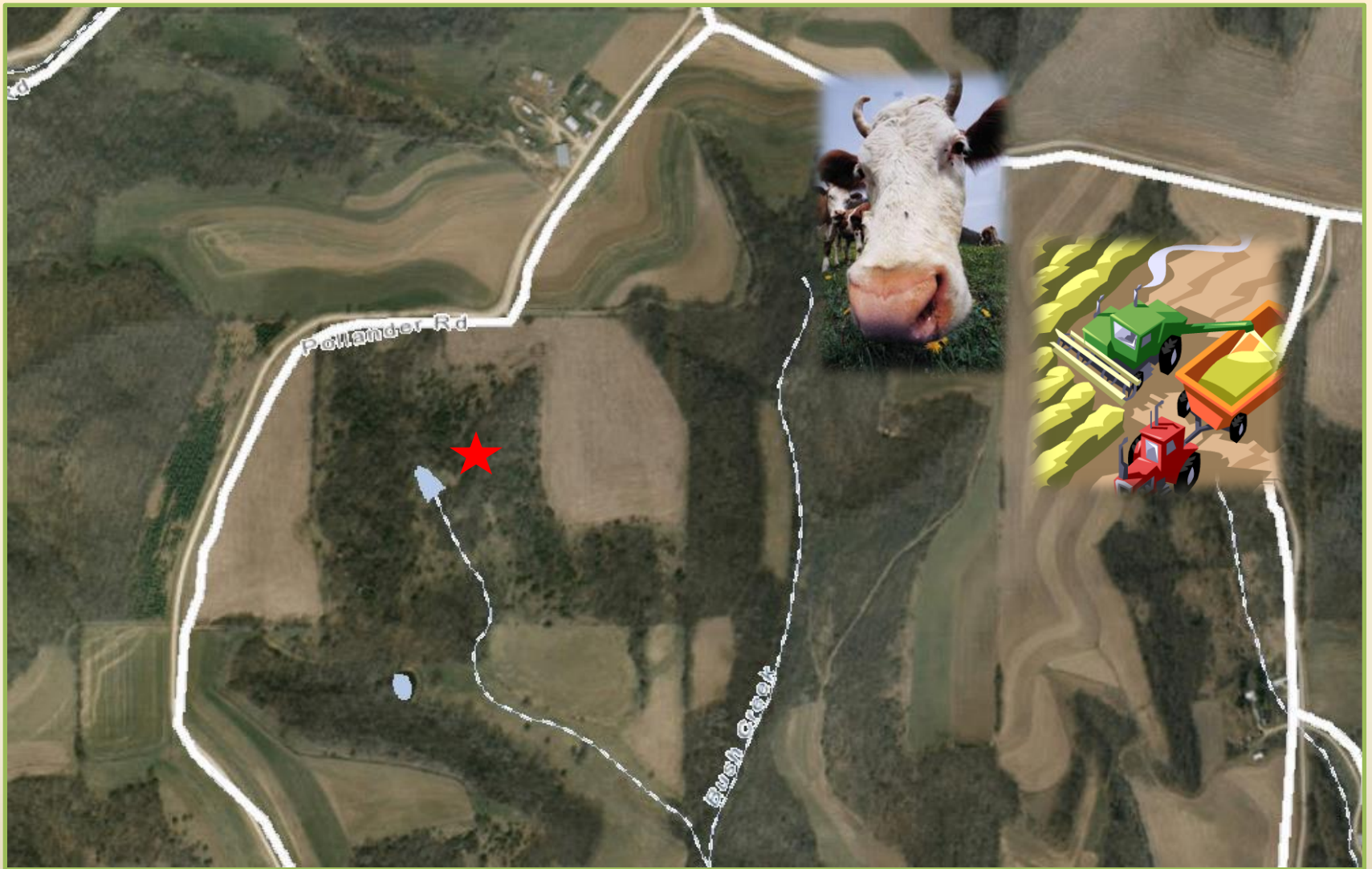
Prairie Area

MFL

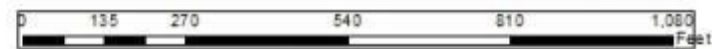


Management goals

- Keep invasives out!
- Enhance and maintain habitat for grassland birds
- Maintain remnant prairie
- Maintain oak openings
- Restore oak woodlands
- FOREVER?



Crawford Co., Town of Wauzeka



Legend

- Property_Boundary
- Brush Clr
- FWS Brush Clearing
- Rx Burn



Invasives and
unhealthy
forest

Heavy removal
of shrub layer
and overstory

Increased light
to understory

Oak Woodland
Natural
Community

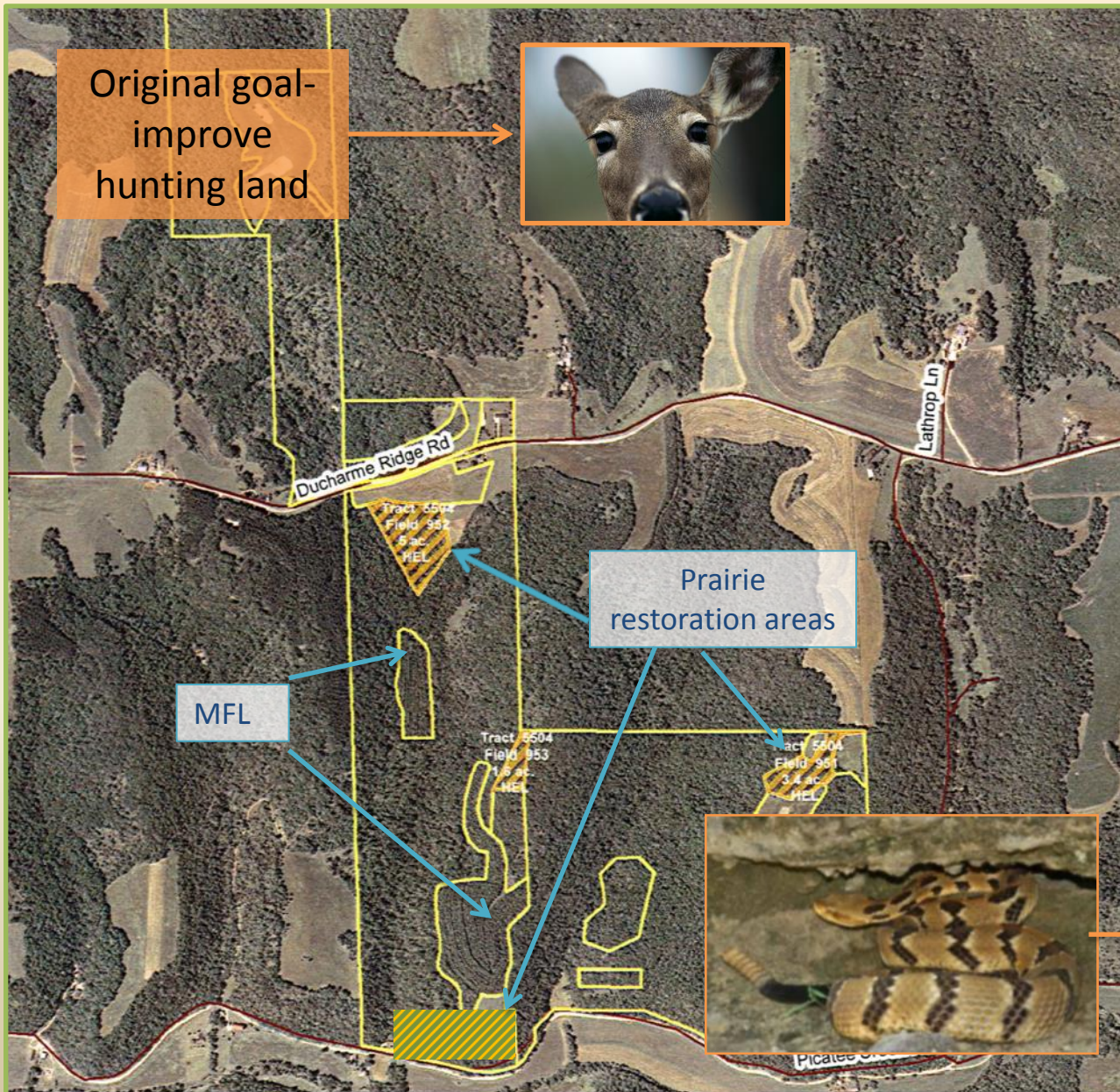


Landowner's targets:
Oak regeneration, red
headed woodpecker, turkey,
deer, blue-winged warbler, brown
thrasher, bull snake

Management goals

- Initiate removal of woody invasives and non-desirable trees
- Control regrowth of woody and herbaceous invasives
- Expand restoration of oak woodland
- Increase understory diversity
- Begin prescribed fire regime
- FOREVER?

Crawford Co.,
Eastman Township,
total 273 acres



Species that also benefitted from management

- Open up part of rock outcrop a little more
- Thin out brush and trees
- Just girdling would help get more sunlight to rock outcrop



Management goals

- Improve forest diversity to favor more oak
- Control invasives
- Maintain areas of prairie remnant
- Increase native ground cover
- Maintain healthy sustainable forest
- FOREVER?

Resources

- A Bird's Eye View- A landowner's guide to protecting neotropical migrants of the upper Mississippi River blufflands
<http://www.inhf.org/a-birds-eye-view.cfm>
- The Driftless Area Initiative – a multi-state partnership
<http://www.driftlessareainitiative.org/index.cfm>
- My Wisconsin Woods- a partnership of government and non-profits
<http://mywisconsinwoods.org/>
- WDNR Wildlife and Your Land – a series of publications on how to manage your land for wildlife
<http://dnr.wi.gov/topic/WildlifeHabitat/yourland.html>

Look for Landowner Incentive Program Funding in Spring!



- Funds will be made available this spring for the Driftless area including Buffalo and Trempealeau counties
- Competitive cost-share with 75% of total project cost covered by LIP, and 25% covered by landowner (match in the form of in-kind match is encouraged!)
- Restoration activities could include- assistance for prescribed burning, tree and brush removal, invasives control, etc.

FOR MORE INFORMATION GO TO-

<http://dnr.wi.gov/topic/endangeredresources/lip.html>