

Landowner Incentive Program and the Important Role of Private Landowners in Habitat Management for At-Risk Species

Darcy Kind
Prairie and Savanna Biologist
Wisconsin DNR



WI Landowner Incentive Program

- Federal program initiated in WI in 2006
- Cost-share program to benefit at-risk species on private land
- Since 2006 LIP has funded 130 projects
 - ranging from 2 to 140 acres totaling more than 4,700 ac
 - awarded \$800,000
 - cleared invasives from more than 1,200 ac
 - conducted prescribed burns on 570 ac
 - benefitted more than 240 at-risk species

WI Landowner Incentive Program

WDNR partnered with Iowa and Minnesota to focus LIP funds on the Driftless Area

Driftless = In Wisconsin, these are lands which were not scoured by the glaciers, and contain some of the highest quality remaining oak savannas, prairies, forests and streams. 97% of land in this area is privately owned





WI Landowner Incentive Program

LIP can offer technical assistance

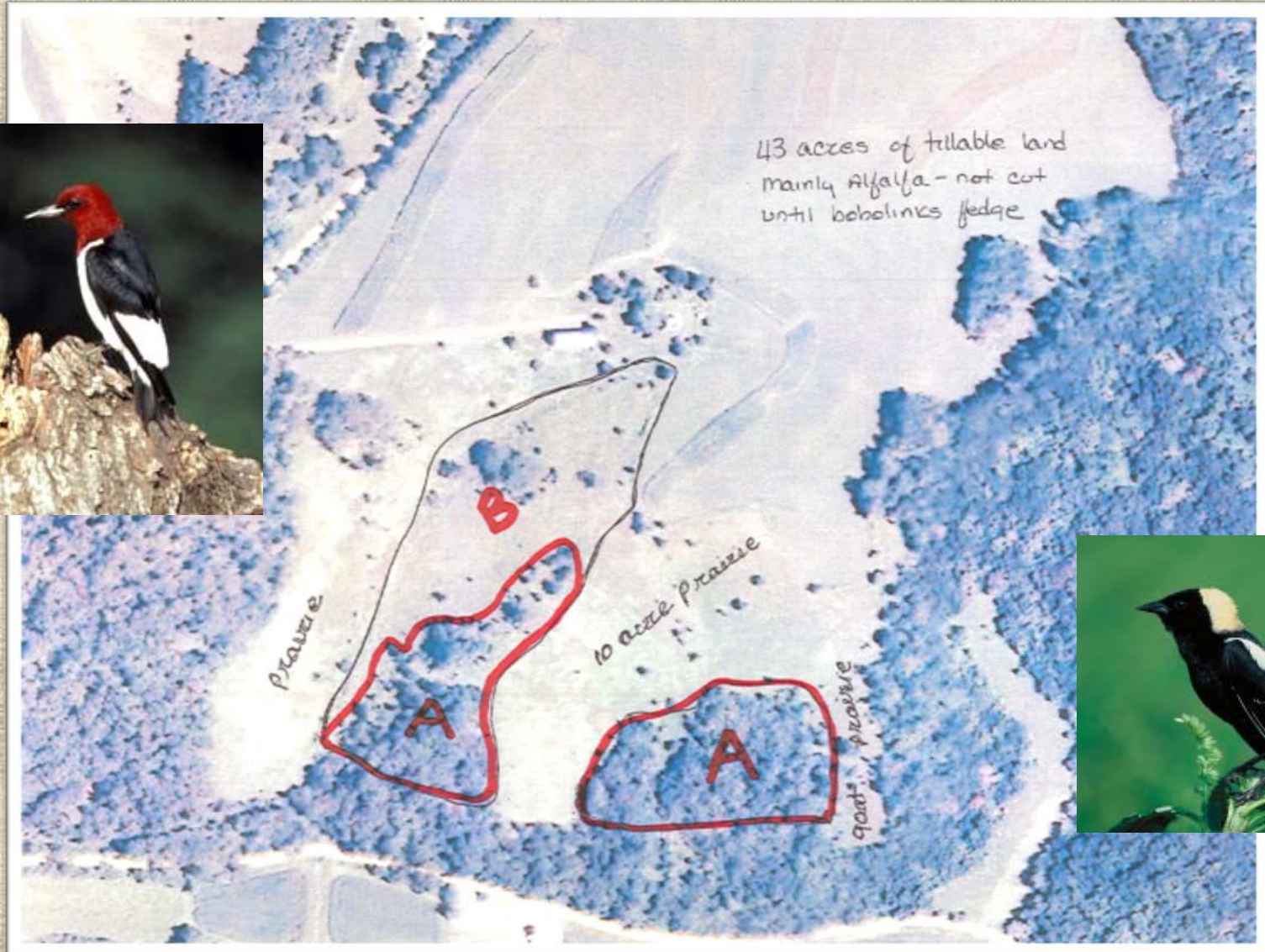
The LIP biologist can work with you over the phone, email, or possibly even meet with you on your property

- Identifying what habitats (or species) may be on your land
- Suggesting approaches to management
- Help in determining priorities and timelines
- Guidance in developing management plans
- Referrals for cost or technical assistance
- Information on land protection options

Cost-share assistance

LIP is a reimbursement program offering up to 75% of the cost for the on-the-ground management, and the landowner match is 25%

What do WI Landowners Do?



Donated Labor Match Summary

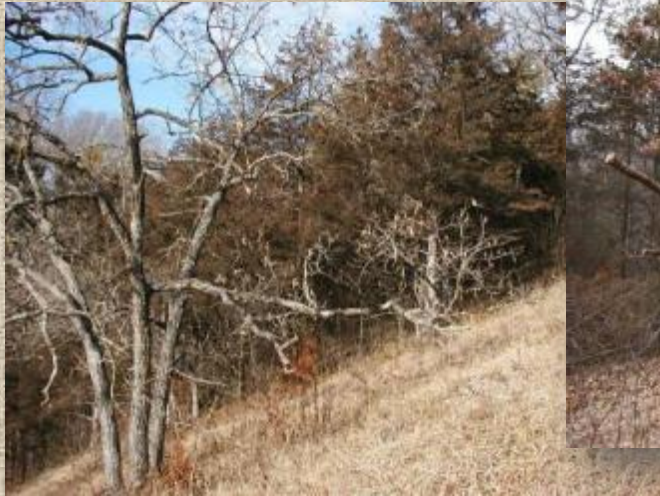
WDNR

Cost Share Recipient Glade (Bill) Wisler Grant Project # PS2009-13Project Title Oak Savanna habitat expansion for the benefit of at-risk birds

Date	Name of Volunteer	Signature of Volunteer	Hours	Rate	Total	Description of Work Performed
3/16/2009	Bill Wisler	See Below (Pg 2)	4	12	48	Cut & treat woody /firebreak -general
3/16/2009	Bill Wisler	See Below (Pg 2)	3	15	45	Cut & treat woody /firebreak -chainsaw
3/16/2009	Jayne Wisler	See Below (Pg 2)	5	12	60	Cut & treat woody /firebreak -general
3/17/2009	Bill Wisler	See Below (Pg 2)	3.5	12	42	Box elder control / firebreaks - general
3/17/2009	Bill Wisler	See Below (Pg 2)	3	15	45	Box elder control / firebreaks - chainsaw
3/17/2009	Jayne Wisler	See Below (Pg 2)	4	12	48	Box elder control / firebreaks - general
3/18/2009	Bill Wisler	See Below (Pg 2)	2	12	24	Box elder control - general
3/18/2009	Bill Wisler	See Below (Pg 2)	3	15	45	Box elder control - chainsaw
3/18/2009	Jayne Wisler	See Below (Pg 2)	4	12	48	Cut/treat multi-flora rose - general
3/19/2009	Bill Wisler	See Below (Pg 2)	3	12	36	Box elder control - general
3/19/2009	Bill Wisler	See Below (Pg 2)	3	15	45	Box elder control - chainsaw
3/19/2009	Jayne Wisler	See Below (Pg 2)	5	12	60	Cut/treat multi-flora rose - general
3/27/2009	Bill Wisler	See Below (Pg 2)	2	12	24	firebreak -chainsaw
3/27/2009	Bill Wisler	See Below (Pg 2)	4	15	60	firebreak -general
3/27/2009	Jayne Wisler	See Below (Pg 2)	4	12	48	Cut/treat multi-flora rose - general
3/30/2009	Bill Wisler	See Below (Pg 2)	3	12	36	Cut/treat honeysuckle - general
3/30/2009	Bill Wisler	See Below (Pg 2)	3	15	45	Cut/treat honeysuckle - chainsaw
3/30/2009	Jayne Wisler	See Below (Pg 2)	2	12	24	Cut/treat multi-flora rose - general
4/6/2009	Bill Wisler	See Below (Pg 2)	4	12	48	Remove leaves/debris for fire prep - gen
4/7/2009	Bill Wisler	See Below (Pg 2)	6	12	72	Remove leaves/debris for fire prep - gen
4/9/2009	Bill Wisler	See Below (Pg 2)	4	12	48	Remove leaves/debris for fire prep - gen
4/19/2009	Jayne Wisler	See Below (Pg 2)	4	12	48	Cut/treat woody vegetation - general
4/21/2009	Bill Wisler	See Below (Pg 2)	4	12	48	Remove leaves/debris for fire prep - gen
4/29/2009	Bill Wisler	See Below (Pg 2)	4	12	48	Cut & spray invasives - gen
5/1/2009	Bill Wisler	See Below (Pg 2)	6.5	12	78	Cut & spray burdock - gen
5/18/2009	Bill Wisler	See Below (Pg 2)	6	12	72	Cut & spray burdock/thistle - gen
		Total			1245	



What do WI Landowners Do?



What do WI Landowners Do?



What do WI Landowners Do?



Power of Partnerships



Where

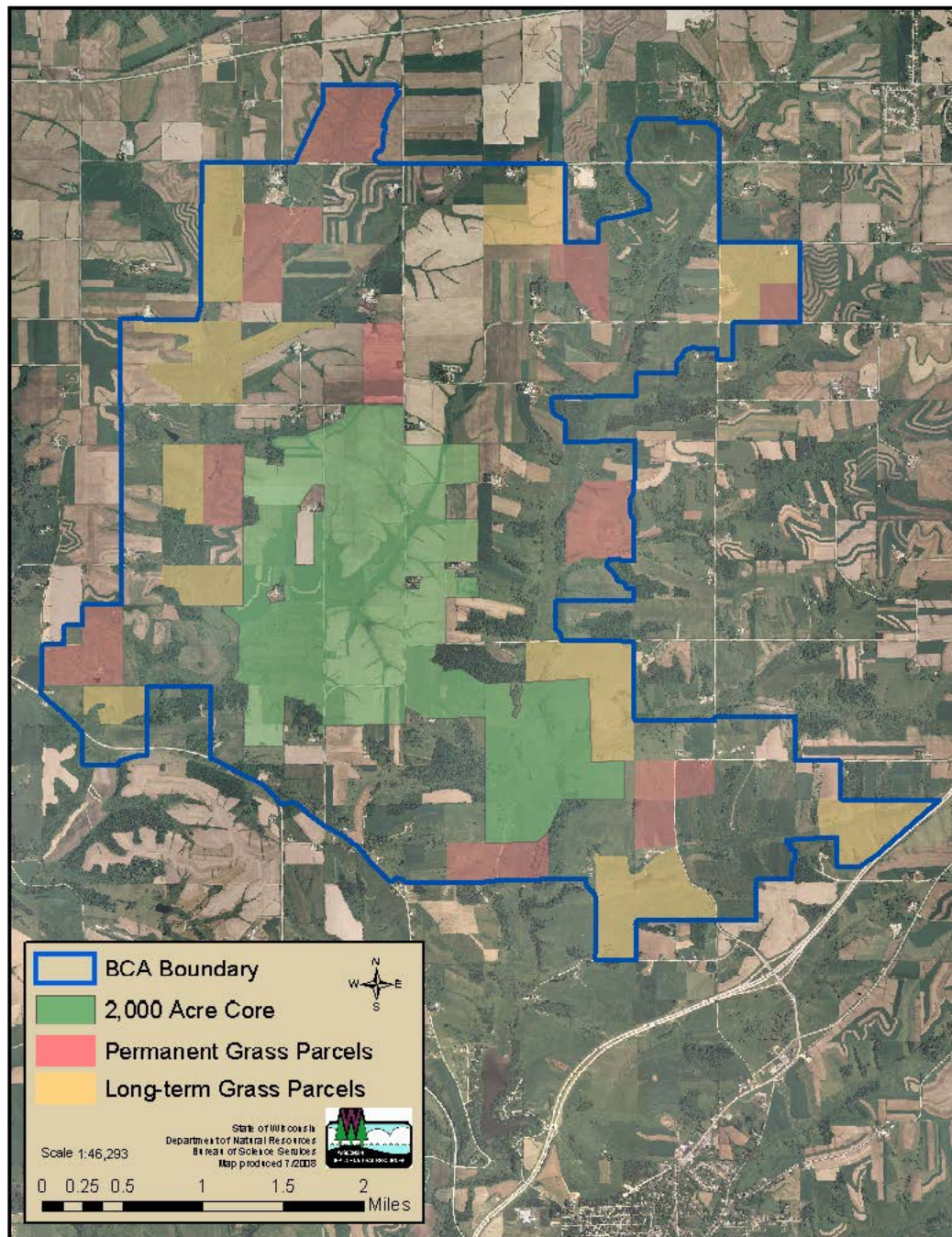
My land

What to

What can

Adaptation

Thinking



Des



Celebrate Successes

