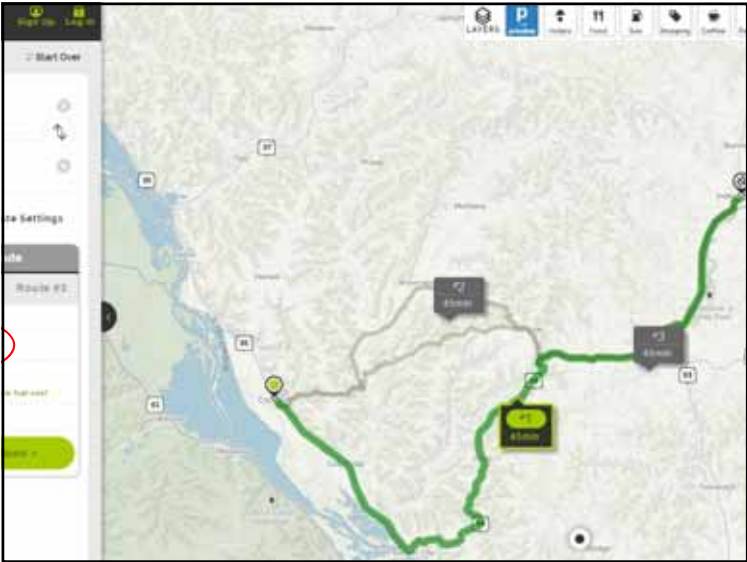


CC WHAT I KNOW TO BE TRUE

ex·pert  
'ek,spərt  
*noun*

- a person who has a comprehensive and authoritative knowledge of a skill in a particular area and whose home of record is more than 50 miles from the location of presentation.



## EXPERIENCE "CONT"



- Time Consuming
- Costly
- Take what you learn and build on it

## KISS-PRINCIPAL



"Thompson, I need you to redefine key metrics through dynamic optimization alignment. The rest of you, figure out what that means."

## IDENTIFY SHORTCOMINGS

- Cash Crop
  - Soybean Stubble
- Dairy
  - Harvested Silage Acre

## DEFINE GOAL

- Start somewhere
- Start broad
- Expand from year to year

### CRAWL – WALK - RUN



### WHAT I KNOW TO BE TRUE

- RYE IS CHEAP!
  - We grow Rye
- RYE GROWS DAMN NEAR ANYWHERE!
  - Establishment easy
- ESTABLISHED RYE MINIMIZES EROSION!
- ESTABLISHED RYE SCAVANGES NUTRIENTS!
- ESTABLISHED RYE CAN HELP WATER INFILTRATION
- MORE FALL GROWTH IS BETTER

### INCREASING FALL GROWTH



- Jump-Start
- Increasing growth
- Feasible seeding options

### GOALS 2017

- CORN
  - Attempt Relay Cropping around V8
  - Possibly in side dressed fertilizer/blend



## GOALS 2017 (CONT)

- Soybeans
  - Attempt Relay Cropping at early Senescence.



## EQUIPMENT



## EQUIPMENT

